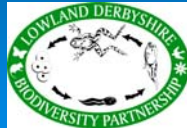


Biodiversity Action Reporting System (BARS)

www.ukbap-reporting.org.uk

Debbie Court
Biodiversity Project Officer
Lowland Derbyshire Biodiversity Partnership



What is BARS?

BARS is a web-based information system that supports :

- planning,
- monitoring
- reporting

of the national and local BAPs

Who is using BARS?

- LBAP co-ordinators and partnerships
- Regional LBAP co-ordinators
- National Lead Partner organisations for HAPs and SAPs
- LBAP partners
- General Public

Why should LBAP partners use BARS?

- Input information once – no forms!
- Allows organisations to compile LBAP action reports
- Some grants require use of BARS
- Can use it to record progress of small scale actions eg no. of vols on site each day
money spent on LBAP projects
- Ties progress with specific actions/targets

Why should LBAP partners use BARS?

- To participate in the 2005 UK BAP reporting round
- Other LBAP partners will be using it
- Publicity for your organisation!
- It can be used to report on projects/documents other than LBAP

How do we envisage BARS working in Lowland Derbyshire?

- Putting all HAPs and SAPs onto BARS.
- Putting all Greenprints onto BARS.
- Agreement from LBAP partners as to who reports on BARS.
- Training / guidance sheets provided for 'reporters'.
- Agree with reporters when they will report.
- Use BARS to compile LBAP Annual Report in April/May 2006

Biodiversity Action Reporting System (BARS) - Microsoft Internet Explorer provided by Derbyshire County Council

File Edit View Favorites Tools Help

Address: <https://www.ukbap-reporting.org.uk/default.asp>

About BARS News & Help Database Search Useful Links Login

Change language Cymraeg Contact Help Site Map

13 January 2006

BARS Biodiversity Action Reporting System



Welcome to BARS

BARS is an information system that supports the planning, monitoring and reporting requirements of national, local and company Biodiversity Action Plans (BAPs). It also allows users to learn about the progress being made with local and national BAPs.

If you have a BARS username and password, login now to access the online data entry application or to generate reports tailored to your organisation or partnership.

If you do not have a BARS username, you can still [search the BARS database](#) to learn about the status of BAP species and habitats, and the conservation action that is underway for particular species and habitats. You can also find out what conservation action is happening in your local area.

Secure user login

Username:

Password:

[Help, I have forgotten my password >](#)
[How do I become a BARS user >](#)

News

The UK BAP 2005 reporting round is extended until 13 January [more >](#)

BARS database

[Search the BARS database >](#)

© 2004-2006 | [Terms and conditions](#) | [Feedback](#) | [Access keys](#) | [FAQs](#)

Home > BARS user area

BARS user area

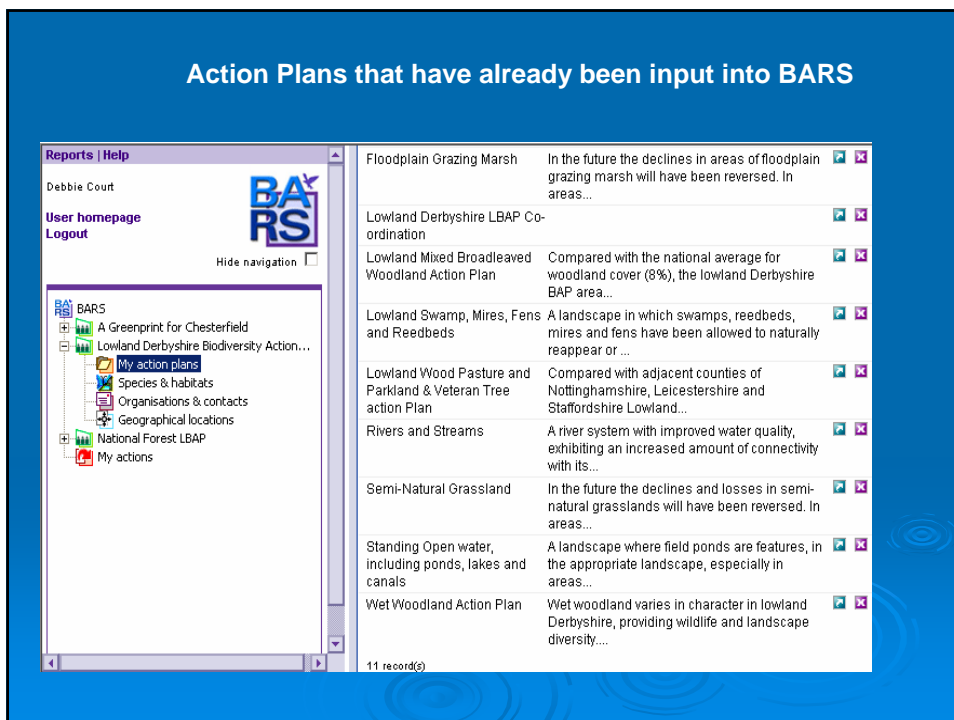
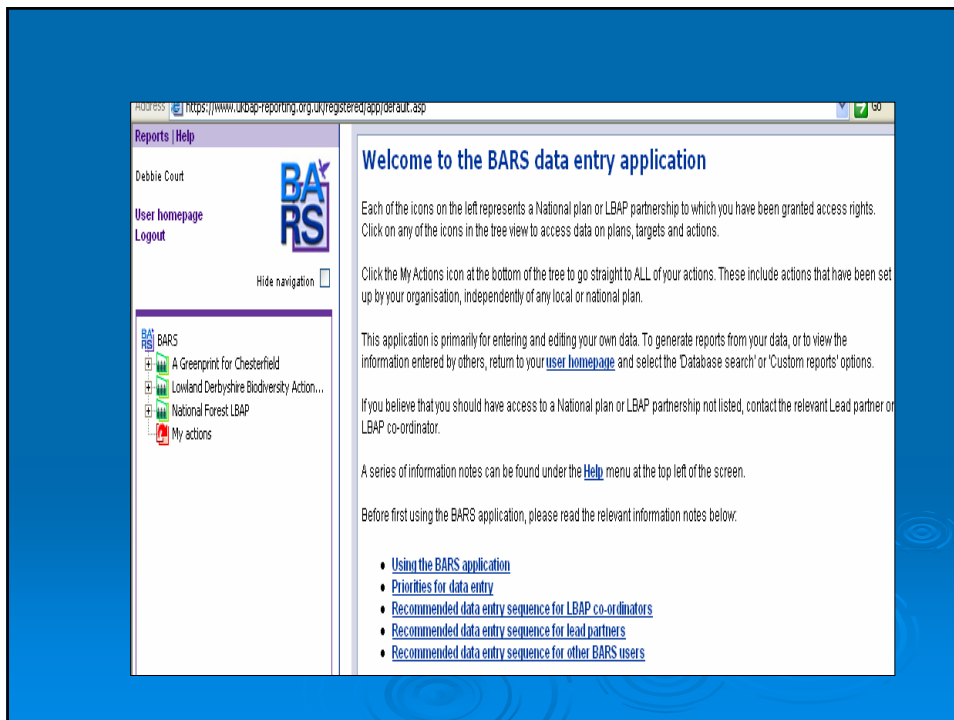
LOGGED IN AS: Debbie Court [Logout](#)

2005 reporting
 Access the 2005 reporting system here. This system has been developed to enable Lead Partners and Local Biodiversity Action Plans (LBAPs) to make their contribution to the 2005 UK BAP reporting round as simply and efficiently as possible. It will be available on this site until the end of December 2005, the deadline for reporting. [Go to 2005 reporting >](#)

BARS data entry application
 Access the BARS database. Here you can view or enter data on status, trends, losses, targets, and actions for any HAP, SAP, Country Strategy or LBAP to which you have been granted access rights by LBAP co-ordinators or Lead Partners. To generate reports from your data, use the custom reports options below. [Go to BARS data entry application >](#)

Custom reports
 Use these options to generate reports for your organisation or for the LBAPs, Country Strategies and National Plans that you, personally, work with. To find out about other plans use the [search the BARS database option](#)

- [My LBAP partnership\(s\)](#)
 Generate a range of reports for plans, targets and actions for any of the LBAPs that you work with. [View reports >](#)
- [My organisation\(s\)](#)
 Produce action-based and resource reports for all national and local BAP actions your organisation is undertaking or is contributing towards. [View reports >](#)
- [My national plans](#)
 Generate action-based and resource reports for the work programmes of the national HAPs and SAPs steering groups you work with. [View reports >](#)
- [My country strategies](#)



Reports from BARS

BARS User Area About BARS News & Help Database Search Useful Links Logout

Contact | Help | Site Map

18 January 2006

Biodiversity Action Reporting System

Home > BARS user area > Display reports for my LBAP partnership(s)

BARS user area

Help

Display reports for:

[My LBAP partnership\(s\)](#)

[My organisation\(s\)](#)

[My national plan\(s\)](#)

[My country strategies](#)

Display reports for my LBAP partnership(s)

Please select the LBAP partnership you wish to report on:

A Greenprint for Chesterfield

Lowland Derbyshire Biodiversity Action Plan

National Forest LBAP

©2004-2006 | [Terms and conditions](#) | [Feedback](#) | [Access keys](#) | [FAQs](#) | [Top of page](#)

Types of reports you can produce on BARS

<p>Partnership reports</p> <p>Partnership habitats and species Habitats and species being worked on by the partnership, includes latest status assessment</p> <p>Plan habitats and species Habitats and species being addressed by each plan</p> <p>Causes of decline Factors causing decline of habitats and species in the partnership area</p> <p>Plan-level reports</p> <p>Complete action plan A complete output of all fields for the highlighted action plan, including targets and actions</p> <p>Plan periodic reports Most recent periodic reports for each plan</p> <p>Constraints to plans Plan-level constraints identified in the periodic reports, summarised for all plans</p>	<p>Target-based reports</p> <p>Target progress across plans Latest assessment and progress report for targets in each plan</p> <p>Progress towards target goals Progress towards numeric target goals, including relevant data from actions</p> <p>Contribution to UK targets Contributions to the national, country and (in England) regional targets for priority habitats</p> <p>Action-based reports</p> <p>Plan action progress summary Number of actions in each status category for each plan</p> <p>Organisation action progress summary Number of actions in each status category for each organisation</p> <p>Action status report An overview of the status of each action for the highlighted plan</p> <p>Action progress report</p>
<p>Resource reports</p> <p>Plan resource report Resource report for each plan: funding, staff and volunteer time</p> <p>Action expenditure Resource expenditure for actions showing shortfalls and excesses</p> <p>Organisation expenditure Allocated and actual resource expenditure by organisations</p>	